

**GAS WORX
COMMUNITY DEVELOPMENT
DISTRICT**

MARCH 18, 2024

AGENDA PACKAGE



2005 PAN AM CIRCLE, SUITE 300
TAMPA. FL 33067

Gas Worx Community Development District

Board of Supervisors

Darryl Shaw, Chairman
Graham Tyrrell, Vice-Chairman
Tee Ann Bailey, Assistant Secretary
Jon Cleary, Assistant Secretary
Vacant, Assistant Secretary

District Staff

Brian Lamb, District Secretary
Vivek K. Babbar, District Counsel
Tonja Stewart, District Engineer

Landowner's Election & Regular Meetings Agenda

Monday, March 18, 2024, at 1:00 p.m.

The Landowner's Election & Regular Meetings of Gas Worx Community Development District will be held on **March 18, 2024, at 1:00 p.m. at the offices of Inframark, which are located at 2005 Pan Am Circle Suite 300 Tampa, FL 33607.** For those who intend to call in below is the Teams information. Please let us know at least 24 hours in advance if you are planning to call into the meeting.

Microsoft Teams meeting: [Click here to join the meeting](#)

Meeting ID: 251 468 571 808

Call in (audio only) +1 646-838-1601

Passcode: FkBJjP

Phone Conference ID: 896 085 773#

All cellular phones and pagers must be turned off during the meeting.

LANDOWNERS ELECTION/MEETING

1. CALL TO ORDER
2. APPOINTMENT OF MEETING CHAIRMAN
3. ANNOUNCEMENT OF CANDIDATES/CALL FOR NOMINATIONS
4. ELECTION OF SUPERVISORS
5. OWNERS' REQUESTS
6. ADJOURNMENT

REGULAR MEETING OF THE BOARD OF SUPERVISORS

1. CALL TO ORDER/ROLL CALL
2. PUBLIC COMMENT ON AGENDA ITEMS *(Each individual has the opportunity to comment and is limited to three (3) minutes for such comment)*
3. BUSINESS MATTERS
 - A. Consideration of Resolution 2024-25; Canvassing & Certifying the Results of the Landowners Election
 - B. Consideration of Resolution 2024-26; Declaring Officers
 - C. Consideration of RFQ Proposals for District Engineering Services
4. STAFF REPORTS
 - A. District Counsel
 - B. District Manager
 - C. District Engineer
5. BOARD MEMBERS COMMENTS
6. PUBLIC COMMENTS
7. ADJOURNMENT

District Office

Inframark
2005 Pan Am Circle, Ste 300
Tampa, Florida 33607

Meeting Location:

Inframark
2005 Pan Am Circle, Ste 300
Tampa, Florida 33607

RESOLUTION 2024-25

**A RESOLUTION OF THE BOARD OF SUPERVISORS OF GAS
WORX COMMUNITY DEVELOPMENT DISTRICT CANVASSING
AND CERTIFYING THE RESULTS OF THE LANDOWNER’S
ELECTION OF SUPERVISORS HELD PURSUANT TO SECTION
190.006(2), FLORIDA STATUTES, ADDRESSING SEAT NUMBER
DESIGNATIONS ON THE BOARD OF SUPERVISORS, AND
PROVIDING AN EFFECTIVE DATE.**

WHEREAS, Gas Worx Community Development District (the “District”) is a local unit of special-purpose government created and existing pursuant to Chapter 190, Florida Statutes; and

WHEREAS, pursuant to Section 190.006(2), Florida Statutes, a landowners meeting is required to be held following the creation of a community development district for the purpose of electing supervisors of the District; and

WHEREAS, following proper publication and notice thereof, on March 18, 2024, the owners of land within the District held a meeting for the purpose of electing supervisors to the District’s Board of Supervisors (“Board”); and

WHEREAS, at the March 18, 2024, meeting, the below recited persons were duly elected by virtue of the votes cast in their respective favor; and

WHEREAS, the Board, by means of this Resolution, desires to canvas the votes, declare and certify the results of the landowner’s election, and announce the Board Members, seat number designations on the Board.

**NOW THEREFORE BE IT RESOLVED BY THE BOARD OF
SUPERVISORS OF GAS WORX COMMUNITY
DEVELOPMENT DISTRICT:**

SECTION 1. The recitals as stated above are true and correct and by this reference are incorporated into and form a material part of this Resolution.

SECTION 2. The following persons are found, certified, and declared to have been duly elected as Supervisors of and for the District, having been elected by the votes cast in their favor as shown, to wit:

Seat 1	_____	Votes: _____
Seat 2	_____	Votes: _____
Seat 3	_____	Votes: _____
Seat 4	_____	Votes: _____
Seat 5	_____	Votes: _____

SECTION 3. In accordance with Section 190.006(2), Florida Statutes, and by virtue of the number of votes cast for the respective Supervisors, they are declared to have been elected for the following terms of office:

Seat 1	_____	Years: _____
Seat 2	_____	Years: _____
Seat 3	_____	Years: _____
Seat 4	_____	Years: _____
Seat 5	_____	Years: _____

SECTION 4. Said terms of office commenced on March 18, 2024.

SECTION 5. If any provision of this Resolution is held to be illegal or invalid, the other provisions shall remain in full force and effect. To the extent the provisions of this Resolution conflict with the provisions of any other resolution of the District, the provisions of this Resolution shall prevail.

PASSED AND ADOPTED THIS 18TH DAY OF MARCH 2024.

ATTEST:

**GAS WORX COMMUNITY
DEVELOPMENT DISTRICT**

Print Name: _____
Secretary/ Assistant Secretary

Print Name: _____
Chair/ Vice Chair of the Board of Supervisors

RESOLUTION 2024-26

**A RESOLUTION OF THE BOARD OF SUPERVISORS
DESIGNATING THE OFFICERS OF GAS WORX COMMUNITY
DEVELOPMENT DISTRICT AND PROVIDING FOR AN
EFFECTIVE DATE.**

WHEREAS, Gas Worx Community Development District (the “District”), is a local unit of special-purpose government created and existing pursuant to Chapter 190, Florida Statutes, being situated entirely within the County of Hillsborough; and

WHEREAS, pursuant to Section 190.006(2), Florida Statutes, a landowners meeting was held for the purpose of electing supervisors of the District; and

WHEREAS, the Board of Supervisors (hereinafter the “Board”) now desires to designate the Officers of the District per F.S. 190.006(6).

**NOW, THEREFORE, BE IT RESOLVED BY THE BOARD OF
SUPERVISORS OF GAS WORX COMMUNITY DEVELOPMENT
DISTRICT:**

1. The following persons are elected to the offices shown, to wit:

_____	Chairman
_____	Vice-Chairman
<u>Brian Lamb</u>	Secretary
<u>Eric Davidson</u>	Treasurer
_____	Assistant Treasurer
_____	Assistant Secretary
_____	Assistant Secretary
_____	Assistant Secretary

2. This Resolution shall become effective immediately upon its adoption.

PASSED AND ADOPTED THIS 18TH DAY OF MARCH 2024.

ATTEST:

**GAS WORX COMMUNITY
DEVELOPMENT DISTRICT**

Print Name: _____
Secretary/ Assistant Secretary

Print Name: _____
Chair/ Vice Chair of the Board of Supervisors



Gas Worx Community Development District

Engineering Services

Submitted by Stantec Consulting Services Inc.

March 11, 2024



CONTENTS

Cover Letter	1
Firm Overview	3
Firm Organization & Staff Overview	6
Why Stantec?	7
SF 330 Qualifications	8



Stantec Consulting Services Inc.
777 S. Harbour Island Blvd., Suite 600
Tampa, Florida 33602

March 11, 2024

Brian Lamb, District Manager
Gas Worx Community Development District
2005 Pan Am Circle, Suite 300
Tampa, Florida 33607

Reference: RFQ for Engineering Services for Gas Worx Community Development District

Dear Mr. Brian Lamb and Gas Worx CDD Board,

Stantec Consulting Services Inc. (Stantec) appreciates the opportunity to submit its qualifications for Professional Engineering Services for the Gas Worx CDD (CDD), in response to your recent request for additional firm information. In short, the Stantec team is qualified to perform this project due to the following:

- Previous experience providing district engineering services for numerous West Central Florida-based CDD's/ familiarity with development and staff.
- A seasoned firm, specializing in community development district engineering contracts that offers an experienced set of eyes for this community's needs.
- Extensive professional experience with community development districts throughout the Central Florida Region;
- Many contracts with CDD's.
- A broad range of in-house capabilities and resources including planning, civil/site engineering, structural engineering, transportation and roadway engineering, survey, GIS, and ecological capabilities.
- A local Tampa office.

Stantec is currently providing numerous West Central Florida-based CDD's with professional consulting engineering services and we would really value continuing this relationship with Inframark. Having worked with Inframark for numerous years, we have accumulated a depth of knowledge and history of how you prefer your CDD contracts to be managed. We care about the community and want to make every attempt to provide high quality, reasonably priced consulting services for the District. This commitment truly separates Stantec from all the competing firms. Stantec has staff that exclusively provides services to CDD's, and this commitment means that there is no other priority, and our response time to residents' questions, Board of Supervisors' requests, and District Manager issues is immediate. Also, due to the number of CDD clients, Stantec provides the most efficient services at the most competitive cost.

Stantec is also proud that many CDD clients are fully resident controlled and that we have broad experience in providing the necessary services for infrastructure maintenance needed by the resident board, as well as design services for new projects. Stantec offers community development districts a full scope of services that includes, but is not limited to, the following:

- | | |
|---|--|
| • Stormwater Management Systems and Facilities (including erosion repair) | • Water Conservation Studies and Design/NPDES Experience |
| • Water and Sewer Systems and Facilities | • Water Supply Studies |
| • Landscaping, Street Lighting Design and Plans | • Contract Management and Inspection Services |
| • Environmental Permitting | • Expert Witness Testimony |
| • Government Permitting | • Irrigation System Plans and Design |
| • Cost Estimates and Bidding Assistance | • Roadways/Traffic Control Measures |

Since 1956, Stantec has grown with Florida, serving both private and public sector clients statewide. With over 400 employees strategically located throughout Florida, Stantec has the talent, flexibility, and resources to provide exceptional services to the Gas Worx CDD.

Each of the key members of Stantec's project team has extensive experience in the engineering, planning, design, and construction of residential projects. Key personnel for the project would include David A. Kemper, P.E., as Principal-in- Charge; Tonja L. Stewart, P.E., as District Engineer/ Senior Project Manager; Vanessa Nurse, as Administrative Support and Mark H. Foster, PSM as Surveyor; and other Stantec administrative, CAD, and technical support personnel, as needed.

TONJA L. STEWART, P.E. - Project Manager

A Senior Project Manager at Stantec and a Florida-registered Professional Engineer, Ms. Stewart offers more than 30 years of experience in a broad range of civil engineering projects, including managing more than 50 CDD District Engineering contracts within the Tampa Bay region. She has been responsible for residential, commercial, and industrial site design; including stormwater management, drainage, roadway, water transmission systems, wastewater collection systems, and wetland and flood plain mitigation. Her responsibilities include providing coordination with project consultants, including geotechnical engineers, environmental scientists, surveyors, attorneys, and title companies.

Stantec looks forward to hearing from you regarding your selection, and we look forward to continuing to serve as District Engineer for the Gas Worx Community Development District.

Sincerely,



David A. Kemper, PE, Senior Principal
Office: (813) 223-9500 x 248 | Mobile: (813) 505-1593
David.Kemper@Stantec.com



Tonja Stewart, PE, Senior Project Manager
Office: (813) 223-9500 | Mobile: (813) 426-4916
Tonja.Stewart@Stantec.com



Firm Overview

The Stantec community unites more than 28,000 specialists working in over 400 locations. We collaborate across disciplines and industries to make buildings, infrastructure, and energy and resource projects happen. Our work—professional consulting in planning, engineering, architecture, interior design, landscape architecture, surveying, environmental sciences, project management, and project economics—begins at the intersection of community, creativity, and client relationships.

Since 1954, our local strength, knowledge, and relationships, coupled with our world-class expertise, have allowed us to go anywhere to meet our clients' needs in more creative and personalized ways. With a long-term commitment to the people and places we serve, Stantec has the unique ability to connect to projects on a personal level and advance the quality of life in communities across the globe.

At Stantec we understand innovation, collaboration, and a strong vision are necessary to create successful projects in the Single and Multi-Unit Family Residential Developments Sector. Our goal in each project is to provide social, environmental, and economic benefits in keeping with the physical site conditions, public expectations, and market realities of the project.

We offer the complete range of professional planning and design services necessary to carry property through planning, approvals and permitting, to design and construction. Stantec's team of experts includes urban planners, civil engineers, and environmental scientists. This team designs distinguished new towns and communities and provides ongoing support to include Community Development District Engineering Contracts.

We have earned a strong reputation for helping nationally recognized clients realize the maximum potential of their vision and investment.

Transforming Land

Developing land into a residential or mixed-use community or a public space with parks and trails requires a mix of technical skill and creative vision, as well as insight into development. We merge this expertise to create value for our clients and community.

Our knowledge of the industry runs deep; we know our communities, the local political climate, and the policies that impact a project's progress so we can guide you through the development process. And, we're with you from beginning to end.

Our surveyors, engineers, and transportation experts lay the groundwork for infrastructure, while our planners create designs using knowledge of local regulations to navigate approvals. Our environmental scientists restore and preserve sites. Our public participation experts engage stakeholders to build consensus. And our landscape architects, and project managers bring designs to life. Together, we cover all aspects of land development while balancing what's important to the community and the environment.

We develop spaces of distinct and local character through the following suite of services:

- Planning
- Civil Engineering
- Landscape Architecture
- Surveys/Geomatics
- Urban Design
- Public Consultation
- Architecture/Buildings Engineering
- Construction Administration
- Environmental Management & Infrastructure
- Geotechnical Engineering
- Transportation Planning & Traffic Engineering

Ability of Applicants Professional Personnel

Tonja Stewart will be our Project Manager, and she personally brings over two decades of experience in the management of over 30 community development district engineering contracts. She truly embodies the specific expertise to successfully execute this contract. She is joined by a team of professionals that have worked with her on previous community development district contracts, and thus, the entire Stantec team knows how to successfully execute task orders for this type of contract.

Time and Budget Requirements

We give our contract manager full authority to directly commit staff and resources throughout the company.

The contract manager also acts as the “traffic cop” for task assignments and is able to internally coordinate the assigning of tasks to the most qualified personnel, expediting the process and qualifying the assigned staff simultaneously. If the schedule or scope changes during the delivery of any project, our contract manager can coordinate the necessary changes directly with the CDD staff to provide immediate response to your needs, and minimize the effect on the schedule, budget, and quality of work. One of our main objectives is to facilitate the CDD Project Manager’s oversight of the projects- be an extension of YOUR staff. This commitment includes four basic concepts:

- Identify, understand, and utilize available technical information (don’t reinvent the wheel).
- Maintain the same core team throughout each project to improve efficiency and quality of project delivery.
- Identify the critical path at the proposal phase, and develop realistic schedule and budget.
- Emphasize strong project management to implement a quality project within the agreed upon schedule and budget.

Preparation and Use of a Task-Specific Detailed Work Plan

At Stantec we call our plan for project success a “Work Plan”. This job specific work plan includes a fully detailed, resources-loaded schedule that includes all tasks, production activities, permitting milestones, and deliverables included in the scope of work for each task assignment. This work plan also includes both personnel and equipment resources that will be needed, along with their cost elements. This will allow the work plan to be balanced against the project budget. In this way as changes are made to the schedule, financial impacts of those changes can be evaluated. The work plan is the way

Tonja as our Project Manager and team leaders can assure the CDD staff that we will deliver each project as contracted. We have an internal checks and balances system of QA/QC that ensures redundancy at every stage and allows for senior staff to oversee the quality of documents and execution of design during construction.

Past Experience and Performance

Stantec has provided district engineering services for more than 50 CDD’s in the state of Florida. Our experience in these types of contracts is unparalleled by other professional service firms. Please see SF 330 for further detailed information.

Commitment to Community

Stantec’s key qualifications in the comprehensive planning and design of residential developments include:

- Over \$1 billion of capitalization in Florida
- Prime consultant for more than 60 Planned Communities, encompassing more than 50,000 acres and 80,000 residential units.
- District Engineer for over 50 community development districts in the state of Florida
- New town developments have included site work for housing, recreation and commercial components.



1.5M acres

of land that our land planners, landscape architects, and other professionals have master planned.

Our reputation for planning, design and scientific expertise is unparalleled in Florida. We work closely with state and federal governmental agencies early in the design process to obtain their input and concerns. We are particularly strong in offering close relationships with Hillsborough County, Pasco County, SWFWMD, and other local permitting agencies.

Applying experience and leading technologies, our professionals and technical staff transform land into viable projects, creating a responsible fit between physical site conditions, fiscal requirements, and environmental constraints.

Our services are provided on projects around the world through approximately 28,000 employees operating out of more than 400 locations across six continents. Our multiple office locations allow for easy management of projects in multiple locations (we have 13 in Florida alone). These types of projects are a specialty at Stantec. We understand how CDD's operate because we've experienced large, single-family development from the planning stages, through design, permitting and ultimately, construction. These types of developments are truly at the core of what we do as a firm.

Commitment to Providing District Engineering

We offer the Gas Worx Community Development District the expertise of a team that has worked on over 50 Community Development Districts providing District Engineering services. Our track record is unsurpassed in the state for managing district engineering contracts and our Project Manager, Tonja Stewart, PE, is personally known to you and has dedicated her over two decades of experience in managing these types of contracts.

We are a full-service team, available in-house and are ready to serve this contract. The following is a list of our current CDD Contracts, all managed by our local staff.

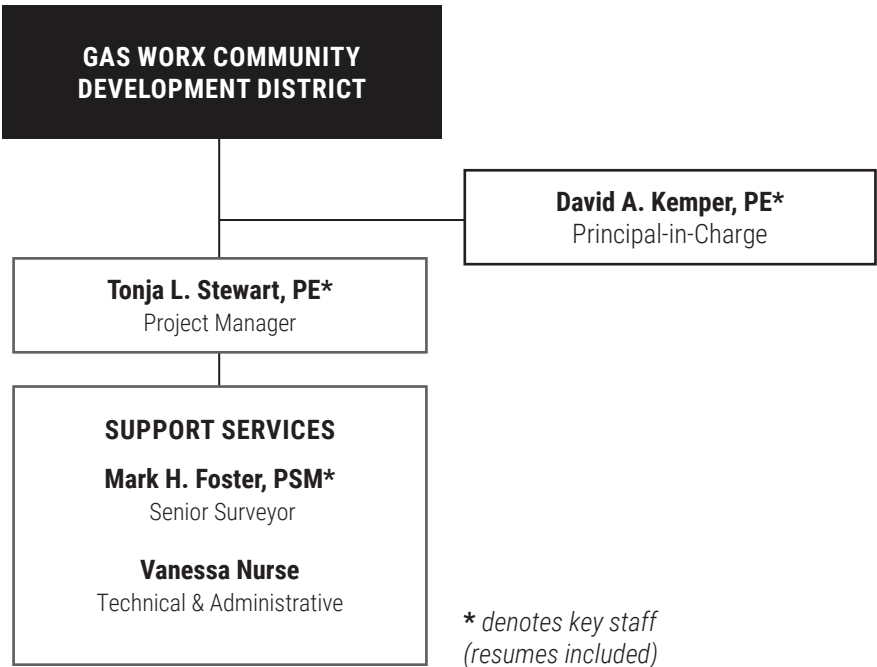
- Creek Preserve CDD, Hillsborough County
- Cypress Creek CDD, Hillsborough County
- Eastlake Oaks CDD, Pinellas County
- Epperson Ranch CDD, Pasco County
- Hammocks CDD, City of Tampa
- Heritage Harbor CDD, Hillsborough County
- Hidden Creek, Hillsborough County
- K Bar Ranch CDD, City of Tampa
- Meadow Pointe CDD, Pasco County
- Meadow Pointe III CDD, Pasco County
- Meadow Pointe IV CDD, Pasco County
- Northwood CDD, Pasco County
- Park Creek CDD, Hillsborough County
- Parkway Center CDD, Hillsborough County
- Rivercrest CDD, Hillsborough County
- South Fork III CDD, Hillsborough County
- Ventana CDD, Hillsborough County

We are confident that we can provide high quality service to Gas Worx for the Professional Engineering Contract. You are familiar with our team and we pride ourselves on adhering to the utmost standard on client service. The following pages showcase our Tampa office's experience and expertise necessary to fully execute our high level of service to Gas Worx.



Team Organization

The organization chart below indicates the names of specific staff proposed for this project. Our team offers local, site-specific experience and expertise in community development district engineering contracts. Our proposed Project Manager Tonja Stewart, is extremely experienced and has lead over 50 community development district contracts. She will be responsible for handling District meetings, construction services, and other engineering tasks. We will have no learning curve working together on this District Engineering Contract.



Tonja Stewart, PE | Project Manager | 35 years of experience

Tonja is a Senior Project Manager who is highly experienced in a broad range of civil engineering projects, including a specialty in managing community development district engineering contracts. Her responsibilities in managing the contracts include providing coordination with key disciplines like environmental scientists, surveyors, attorneys, and title companies. She has experience with residential, commercial, and industrial site design, including stormwater management, drainage, roadway, water transmission systems, wastewater collection systems, and wetland and flood plain mitigation. She is highly respected for the work she has done on over 50 community development districts within the Tampa Bay Region.



David Kemper, PE | Principal-in-Charge | 43 years of experience

Dave’s professional experience includes management and design of residential, office, commercial, industrial, institutional, recreational, and mixed-use projects. He has extensive experience in coordinating the efforts of a multi-disciplined team to address all aspects of the site development including planning/zoning, survey, geotechnical, environmental, biology, traffic, and landscape architecture. This includes a particular emphasis on providing the engineering design after large scale and complex projects have been conceptualized.



Mark Foster, PSM | Land Surveyor Manager | 43 years of experience

Mark has served in various surveying roles throughout his career, including survey party chief, survey technician, field crew supervisor, project surveyor and survey project manager. His current responsibilities include client coordination, preparation of proposals, management of projects, supervision of field and office personnel and preparation of survey maps and reports.



Why Stantec?

- **Our staff understands the local area**
We live and work in the Tampa and Central Florida area. Our Team has extensive professional experience with community development districts throughout the Pasco County, Hillsborough County, and the Tampa Bay Region. Our staff understands this area and the permitting process and have a thorough understanding of the Gas Worx CDD environment.
- **Our similar projects exemplify our expertise and ability to overcome challenges**
We've done this before. We've provided community development district engineering services to over 50 CDD's in the Central Florida Region. We offer you proven solutions and creative design.
- **Project Manager with more than two decades of providing district engineering services**
Can you trust that the firm you select is not only knowledgeable in community development districts, but offers a project manager that has personally led the efforts on over 50 community development district contracts? Our team is proven in these areas - you can trust us.
- **A commitment to the Community Development District**
We understand the CDD's, organizational structure, and how they desire their selected district engineer to perform. We look forward to exceeding our reputation and high level of client services during this contract.
- **A broad range of in-house capabilities and resources**
Our Team has a broad range of in-house capabilities and resources including planning, civil/site engineering, structural engineering, transportation and roadway engineering, survey, GIS and ecological capabilities.



SF 330 Qualifications

ARCHITECT-ENGINEER QUALIFICATIONS

PART I - CONTRACT-SPECIFIC QUALIFICATIONS

A. CONTRACT INFORMATION

1. TITLE AND LOCATION (City and State)	
Gas Worx Community Development District	
2. PUBLIC NOTICE DATE	3. SOLICITATION OR PROJECT NUMBER
	N/A

B. ARCHITECT-ENGINEER POINT OF CONTACT

4. NAME AND TITLE		
Tonja Stewart, PE, Senior Project Manager		
5. NAME OF FIRM		
Stantec Consulting Services Inc.		
6. TELEPHONE NUMBER	7. FAX NUMBER	8. E-MAIL ADDRESS
813.426.4916 (c) 813.746.3842 (o)	813.223.0009	tonja.stewart@stantec.com

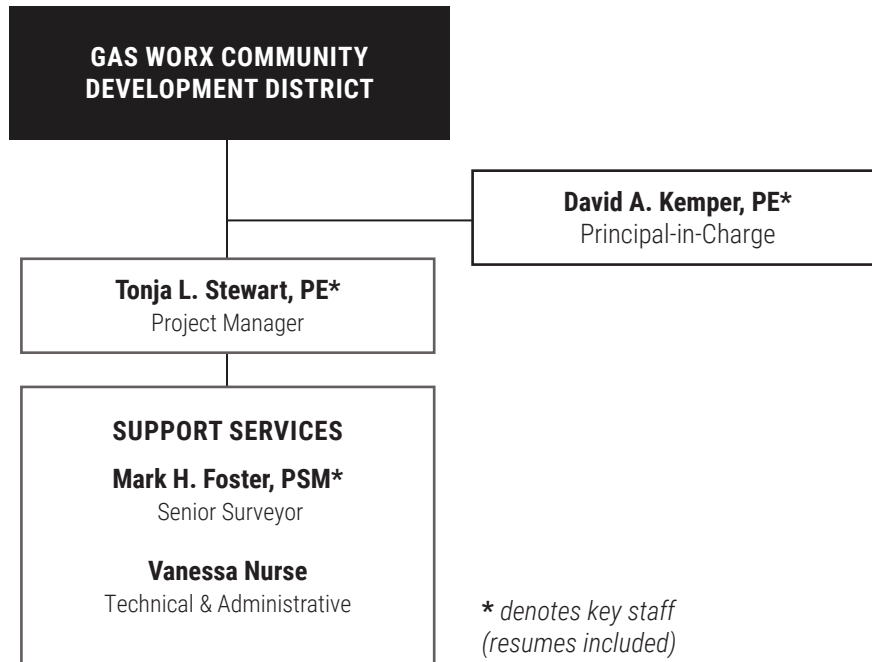
C. PROPOSED TEAM

(Complete this section for the prime contractor and all key subcontractors.)

	PRIME	JV	SUBCON TRACTOR	9. FIRM NAME	10. ADDRESS	11. ROLE IN THIS CONTRACT
a.	<input checked="" type="checkbox"/>			Stantec Consulting Services Inc. <input checked="" type="checkbox"/> CHECK IF BRANCH OFFICE	777 S Harbour Island Boulevard, Suite 600, Tampa, FL 33602	District Engineering Services
b.				<input type="checkbox"/> CHECK IF BRANCH OFFICE		
c.				<input type="checkbox"/> CHECK IF BRANCH OFFICE		
d.				<input type="checkbox"/> CHECK IF BRANCH OFFICE		
e.				<input type="checkbox"/> CHECK IF BRANCH OFFICE		
f.				<input type="checkbox"/> CHECK IF BRANCH OFFICE		
g.				<input type="checkbox"/> CHECK IF BRANCH OFFICE		

D. ORGANIZATIONAL CHART OF PROPOSED TEAM

☒ (Attached)



E. RESUMES OF KEY PERSONNEL PROPOSED FOR THIS CONTRACT

(Complete one Section E for each key person.)

12. NAME	13. ROLE IN THIS CONTRACT	14. YEARS EXPERIENCE	
David A. Kemper, PE	Principal-in-Charge	a. TOTAL	b. WITH CURRENT FIRM
		43	24
15. FIRM NAME AND LOCATION (City and State)			
Stantec Consulting Services Inc., Tampa, Florida			
16. EDUCATION (DEGREE AND SPECIALIZATION)		17. CURRENT PROFESSIONAL REGISTRATION (STATE AND DISCIPLINE)	
Master of Science, Engineering Management, Missouri University of Science & Technology, Rolla, Missouri, 1984 Bachelor of Science, Civil Engineering, Missouri University of Science & Technology, Rolla, Missouri, 1979		Professional Engineer #36271, State of Florida	
18. OTHER PROFESSIONAL QUALIFICATIONS (Publications, Organizations, Training, Awards, etc.)			
2011 Engineer of the Year, American Society of Civil Engineers, West Coast Branch 2004 FES/FICE Leadership Institute, Graduate			
19. RELEVANT PROJECTS			
a.	(1) TITLE AND LOCATION (City and State)	(2) YEAR COMPLETED	
	Bexley Ranch Land DRI Pasco County, Florida	PROFESSIONAL SERVICES	CONSTRUCTION (If applicable)
		2014	2014
	(3) BRIEF DESCRIPTION (Brief scope, size, cost, etc.) AND SPECIFIC ROLE <input checked="" type="checkbox"/> Check if project performed with current firm		
	DRI engineering studies, master water, wastewater and master drainage planning, floodplain studies, and preliminary cost estimating. Stantec has completed extensive site analysis and design alternatives to assist the property owner and developer, Newland Communities, with the future development and use of this site located in central Pasco County directly adjacent to the Suncoast Parkway.		
b.	(1) TITLE AND LOCATION (City and State)	(2) YEAR COMPLETED	
	MetWest Mixed Use Development Tampa, Florida	PROFESSIONAL SERVICES	CONSTRUCTION (If applicable)
		2019	2019
	(3) BRIEF DESCRIPTION (Brief scope, size, cost, etc.) AND SPECIFIC ROLE <input checked="" type="checkbox"/> Check if project performed with current firm		
	Served as Principal and Sr. Project Manager for this award-winning mixed-use project located in Tampa's major Westshore Business District. Stantec services were provided from the initial planning stages through full development/build-out. These services included rezoning, entitlement, landscape architecture, civil/site engineering, transportation, permitting and construction support services. MetWest comprises over one million s.f. office uses, 74,000 s.f. of retail/restaurant uses, 254 multi-family units, and a 240-room hotel on a 30-acre site. The project includes three 240,000 s.f. office buildings, two of which were built-to-suit for Price Waterhouse Cooper (PwC). Stantec has assisted the Owner (Metropolitan Life) and Developer in various infrastructure cost allocations.		
c.	(1) TITLE AND LOCATION (City and State)	(2) YEAR COMPLETED	
	The Preserve at Wilderness Lakes Community Development District , Pasco County, Florida	PROFESSIONAL SERVICES	CONSTRUCTION (If applicable)
		2018	N/A
	(3) BRIEF DESCRIPTION (Brief scope, size, cost, etc.) AND SPECIFIC ROLE <input checked="" type="checkbox"/> Check if project performed with current firm		
	Responsible for overall project and team management for a range of engineering services associated with serving as the Community Development District (CDD) District Engineer for this development of 850 lots on +/- 578 acres. The CDD assets include a high end recreation facility, roadways, security gates, stormwater management systems, landscape/hardscape, and irrigation systems.		
d.	(1) TITLE AND LOCATION (City and State)	(2) YEAR COMPLETED	
	Hawks Point Subdivision Hillsborough County, Florida	PROFESSIONAL SERVICES	CONSTRUCTION (If applicable)
		2008	2008
	(3) BRIEF DESCRIPTION (Brief scope, size, cost, etc.) AND SPECIFIC ROLE <input checked="" type="checkbox"/> Check if project performed with current firm		
	Responsible for overall client interface and project and team management. Stantec was retained as a multi-disciplinary consultant in the development of the Toulon Development. The site is a 218-acre, multi-phased, 232-unit, single-family residential subdivision.		

E. RESUMES OF KEY PERSONNEL PROPOSED FOR THIS CONTRACT

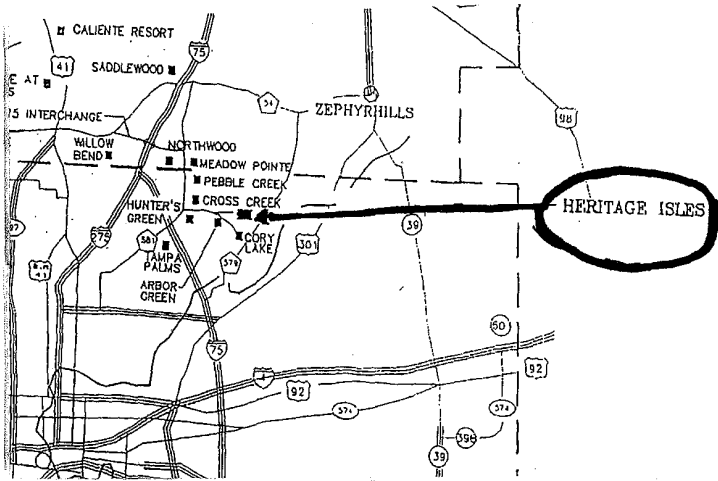
(Complete one Section E for each key person.)

12. NAME		13. ROLE IN THIS CONTRACT		14. YEARS EXPERIENCE	
Tonja Stewart, PE		Senior Project Manager		a. TOTAL	b. WITH CURRENT FIRM
				35	15
15. FIRM NAME AND LOCATION (City and State)					
Stantec Consulting Services Inc., Tampa, Florida					
16. EDUCATION (DEGREE AND SPECIALIZATION)			17. CURRENT PROFESSIONAL REGISTRATION (STATE AND DISCIPLINE)		
Bachelor of Science, Civil Engineering, University of Alabama, Tuscaloosa, Alabama, 1987			Registered Engineer #47704, State of Florida		
18. OTHER PROFESSIONAL QUALIFICATIONS (Publications, Organizations, Training, Awards, etc.)					
2009 Tampa Bay Builders, Associate of the Year 1997 Hillsborough County Chamber of Commerce, Leadership Hillsborough					
19. RELEVANT PROJECTS					
a.	(1) TITLE AND LOCATION (City and State)		(2) YEAR COMPLETED		
	Heritage Isles Golf & Country Club Community Development District Hillsborough County, FL		PROFESSIONAL SERVICES		CONSTRUCTION (If applicable)
			Ongoing		N/A
	(3) BRIEF DESCRIPTION (Brief scope, size, cost, etc.) AND SPECIFIC ROLE <input checked="" type="checkbox"/> Check if project performed with current firm				
	Stantec is providing District Engineering services includes the operation and maintenance of District infrastructure, including stormwater management systems. Our team has been responsible for ongoing client and project coordination, account management, and project scheduling.				
b.	(1) TITLE AND LOCATION (City and State)		(2) YEAR COMPLETED		
	TPOST Community Development District Hillsborough County, FL		PROFESSIONAL SERVICES		CONSTRUCTION (If applicable)
			Ongoing		N/A
	(3) BRIEF DESCRIPTION (Brief scope, size, cost, etc.) AND SPECIFIC ROLE <input checked="" type="checkbox"/> Check if project performed with current firm				
	Stantec is providing District Engineering services includes the operation and maintenance of District infrastructure, including stormwater management systems. Our team has been responsible for ongoing client and project coordination, account management, and project scheduling.				
c.	(1) TITLE AND LOCATION (City and State)		(2) YEAR COMPLETED		
	Northwood Community Development District Land O' Lakes, Florida		PROFESSIONAL SERVICES		CONSTRUCTION (If applicable)
			Ongoing		N/A
	(3) BRIEF DESCRIPTION (Brief scope, size, cost, etc.) AND SPECIFIC ROLE <input checked="" type="checkbox"/> Check if project performed with current firm				
	Responsible for ongoing client and project coordination, account management, and project scheduling. Stantec serves as District Engineer and has been responsible for the design, permitting, and construction administration of a 2,000 s.f. clubhouse, as well as Southwest Florida Water Management District periodic inspections of the community stormwater facilities.				
d.	(1) TITLE AND LOCATION (City and State)		(2) YEAR COMPLETED		
	Meadow Pointe III Community Development District Pasco County, Florida		PROFESSIONAL SERVICES		CONSTRUCTION (If applicable)
			Ongoing		N/A
	(3) BRIEF DESCRIPTION (Brief scope, size, cost, etc.) AND SPECIFIC ROLE <input checked="" type="checkbox"/> Check if project performed with current firm				
	Responsible for ongoing client and project coordination, account management, and project scheduling. Stantec has provided a range of engineering services associated with serving as the Community Development District (CDD) District Engineer. The CDD assets include a recreation facility, roadways, stormwater management systems, landscape/hardscape, and irrigation systems.				

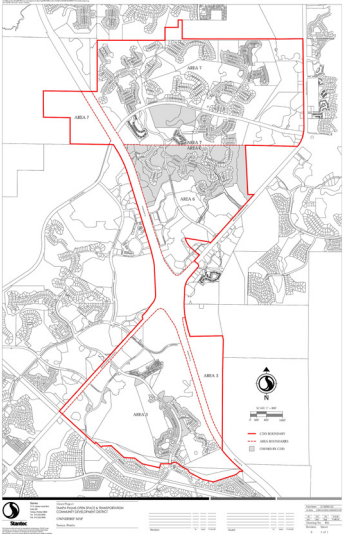
E. RESUMES OF KEY PERSONNEL PROPOSED FOR THIS CONTRACT

(Complete one Section E for each key person.)

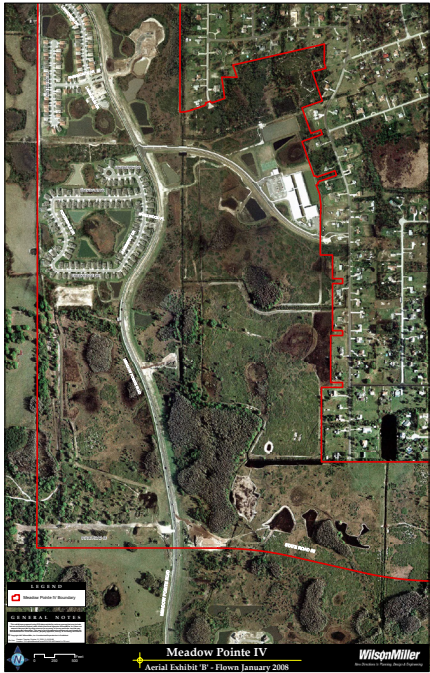
12. NAME		13. ROLE IN THIS CONTRACT		14. YEARS EXPERIENCE	
Mark H. Foster, PSM		Land Surveyor		a. TOTAL	b. WITH CURRENT FIRM
				43	14
15. FIRM NAME AND LOCATION (City and State)					
Stantec Consulting Services Inc., Tampa, Florida					
16. EDUCATION (DEGREE AND SPECIALIZATION)			17. CURRENT PROFESSIONAL REGISTRATION (STATE AND DISCIPLINE)		
			Professional Land Surveyor #5535, State of Florida		
18. OTHER PROFESSIONAL QUALIFICATIONS (Publications, Organizations, Training, Awards, etc.)					
Point of Contact, Society of American Military Engineers, Tampa Bay Post					
19. RELEVANT PROJECTS					
a.	(1) TITLE AND LOCATION (City and State)		(2) YEAR COMPLETED		
	Lake Toscana Conservation Subdivision Hillsborough County, Florida		PROFESSIONAL SERVICES		CONSTRUCTION (If applicable)
			2003-2007		N/A
	(3) BRIEF DESCRIPTION (Brief scope, size, cost, etc.) AND SPECIFIC ROLE <input checked="" type="checkbox"/> Check if project performed with current firm				
	Responsible for project surveying activities to include the boundary surveys associated with the acquisition of property, surveys of Ordinary High Water Line of the Little Manatee River to document the limits of Sovereignty Submerged Lands, and subdivision plat preparation for a 102-lot subdivision located on the site of an old 510-acre dairy farm on the banks of the Little Manatee River in southern Hillsborough County.				
b.	(1) TITLE AND LOCATION (City and State)		(2) YEAR COMPLETED		
	Winthrop Village Traditional Neighborhood Design (TND) Hillsborough County, Florida		PROFESSIONAL SERVICES		CONSTRUCTION (If applicable)
			2006-2008		N/A
	(3) BRIEF DESCRIPTION (Brief scope, size, cost, etc.) AND SPECIFIC ROLE <input checked="" type="checkbox"/> Check if project performed with current firm				
	Responsible for the preparation of boundary surveys to support property acquisition, subdivision platting, construction layout ,and as-built surveys for a 256-unit, traditional neighborhood design (TND) project. Special care was also required at the project boundaries to ensure compatibility with the surrounding developments.				
c.	(1) TITLE AND LOCATION (City and State)		(2) YEAR COMPLETED		
	Westlake Village Hillsborough County, Florida		PROFESSIONAL SERVICES		CONSTRUCTION (If applicable)
			2005-2008		N/A
	(3) BRIEF DESCRIPTION (Brief scope, size, cost, etc.) AND SPECIFIC ROLE <input checked="" type="checkbox"/> Check if project performed with current firm				
	Responsible for the preparation of surveys with associated on-site geotechnical investigations and for the off-site route survey needed to support the design of transportation improvements for this proposed development near the Sun City Center.				
d.	(1) TITLE AND LOCATION (City and State)		(2) YEAR COMPLETED		
	Toulon Master Planned Community Hillsborough County, Florida		PROFESSIONAL SERVICES		CONSTRUCTION (If applicable)
			2004-2007		N/A
	(3) BRIEF DESCRIPTION (Brief scope, size, cost, etc.) AND SPECIFIC ROLE <input checked="" type="checkbox"/> Check if project performed with current firm				
	Responsible for the platting and construction related efforts for this phased master planned development. The site is a 218-acre, multi-phased, 232-unit, single-family residential subdivision.				

F. EXAMPLE PROJECTS WHICH BEST ILLUSTRATE PROPOSED TEAM'S QUALIFICATIONS FOR THIS CONTRACT (Present as many projects as requested by the agency, or 10 projects, if not specified. Complete one Section F for each project.)		20. EXAMPLE PROJECT KEY NUMBER 1					
21. TITLE AND LOCATION (City and State) Heritage Isles Golf & Country Club Community Development District Hillsborough County, FL		22. YEARS COMPLETED <table border="1"> <tr> <td>PROFESSIONAL SERVICES</td> <td>CONSTRUCTION (if applicable)</td> </tr> <tr> <td>Ongoing</td> <td>N/A</td> </tr> </table>		PROFESSIONAL SERVICES	CONSTRUCTION (if applicable)	Ongoing	N/A
PROFESSIONAL SERVICES	CONSTRUCTION (if applicable)						
Ongoing	N/A						
23. PROJECT OWNER'S INFORMATION							
a. PROJECT OWNER Heritage Isles Golf & Country Club CDD		b. POINT OF CONTACT NAME Mark Vega, District Manager, Inframark					
		c. POINT OF CONTACT TELEPHONE NUMBER 813.991.1140					
24. BRIEF DESCRIPTION OF PROJECT AND RELEVANCE TO THIS CONTRACT (Include scope, size, and cost) <p>The Heritage Isles Golf & Country Club Community Development District ("District") is a 746-acre, independent local unit of special-purpose government created pursuant to and existing under the provisions of Chapter 190, Florida Statutes, and established by Ordinance 97-12, adopted of the Board of County Commissioners of Hillsborough County, Florida which became effective on October 9th, 1997.</p> <p>Stantec is providing District Engineering services includes the operation and maintenance of District infrastructure, including stormwater management systems. Our team has been responsible for ongoing client and project coordination, account management, and project scheduling.</p>							
 <p style="text-align: center;">HERITAGE ISLES C.D.D.</p>							

25. FIRMS FROM SECTION C INVOLVED WITH THIS PROJECT			
a.	(1) FIRM NAME	(2) FIRM LOCATION (City and State)	(3) ROLE
	Stantec	Tampa, FL	Civil Engineering
b.	(1) FIRM NAME	(2) FIRM LOCATION (City and State)	(3) ROLE
c.	(1) FIRM NAME	(2) FIRM LOCATION (City and State)	(3) ROLE
d.	(1) FIRM NAME	(2) FIRM LOCATION (City and State)	(3) ROLE

F. EXAMPLE PROJECTS WHICH BEST ILLUSTRATE PROPOSED TEAM'S QUALIFICATIONS FOR THIS CONTRACT (Present as many projects as requested by the agency, or 10 projects, if not specified. Complete one Section F for each project.)		20. EXAMPLE PROJECT KEY NUMBER 2	
21. TITLE AND LOCATION (City and State)		22. YEARS COMPLETED	
TPOST Community Development District Hillsborough County, FL		PROFESSIONAL SERVICES	CONSTRUCTION (if applicable)
		Ongoing	N/A
23. PROJECT OWNER'S INFORMATION			
a. PROJECT OWNER	b. POINT OF CONTACT NAME	c. POINT OF CONTACT TELEPHONE NUMBER	
TPOST CDD	Mark Vega, District Manager, Inframark	813.991.1140	
24. BRIEF DESCRIPTION OF PROJECT AND RELEVANCE TO THIS CONTRACT (Include scope, size, and cost)			
<p>Tampa Palms Open Space & Transportation Community Development District (TPOST CDD) is an independent local unit of special-purpose government in Hillsborough County, Florida. Created pursuant to and existing under the provisions of Chapter 190, Florida Statutes, as an alternative method of planning, acquiring, operating and maintaining community-wide improvements in planned communities, the CDD was established to create and maintain a desirable infrastructure for a developing New Tampa area. By issuing bonds for neighborhoods in the area, the CDD provided effective financing for basic public improvements and community facilities. The TPOST District encompasses three New Tampa neighborhoods: Tampa Palms III- Area 3, Richmond Place- Area 6, and West Meadows- Area 7.</p> <p>Stantec is providing District Engineering services includes the operation and maintenance of District infrastructure, including stormwater management systems. Our team has been responsible for ongoing client and project coordination, account management, and project scheduling.</p>			
			


25. FIRMS FROM SECTION C INVOLVED WITH THIS PROJECT			
a.	(1) FIRM NAME	(2) FIRM LOCATION (City and State)	(3) ROLE
	Stantec	Tampa, FL	Civil Engineering
b.	(1) FIRM NAME	(2) FIRM LOCATION (City and State)	(3) ROLE
c.	(1) FIRM NAME	(2) FIRM LOCATION (City and State)	(3) ROLE
d.	(1) FIRM NAME	(2) FIRM LOCATION (City and State)	(3) ROLE

F. EXAMPLE PROJECTS WHICH BEST ILLUSTRATE PROPOSED TEAM'S QUALIFICATIONS FOR THIS CONTRACT (Present as many projects as requested by the agency, or 10 projects, if not specified. Complete one Section F for each project.)		20. EXAMPLE PROJECT KEY NUMBER	
		3	
21. TITLE AND LOCATION (City and State)		22. YEARS COMPLETED	
Meadow Pointe IV Community Development District Pasco County, FL		PROFESSIONAL SERVICES	CONSTRUCTION (if applicable)
		2006-Ongoing	N/A
23. PROJECT OWNER'S INFORMATION			
a. PROJECT OWNER	b. POINT OF CONTACT NAME	c. POINT OF CONTACT TELEPHONE NUMBER	
Meadow Pointe IV CDD	Darryl Adams, Rizzetta & Co.	813.994.1001 x7958	
24. BRIEF DESCRIPTION OF PROJECT AND RELEVANCE TO THIS CONTRACT (Include scope, size, and cost)			
<p>The Meadow Pointe IV Community Development District currently encompasses approximately 771-acres of land located entirely within Pasco County, Florida. As a local unit of special-purpose government, the District provides an alternative means for planning, financing, constructing, operating and maintaining various public improvements and community facilities within its jurisdiction. Stantec's District Engineering services include the operation and maintenance of District infrastructure, including roads and stormwater management systems.</p> <p>Meadow Pointe IV includes the following communities: Enclave, Provence, Meadow Pointe North, The Haven, Whisenton Place, Parkmonte, Shellwood Place, Windsor, and Meridan.</p>			
			



25. FIRMS FROM SECTION C INVOLVED WITH THIS PROJECT			
a.	(1) FIRM NAME	(2) FIRM LOCATION (City and State)	(3) ROLE
	Stantec	Tampa, FL	Civil Engineering
b.	(1) FIRM NAME	(2) FIRM LOCATION (City and State)	(3) ROLE
c.	(1) FIRM NAME	(2) FIRM LOCATION (City and State)	(3) ROLE
d.	(1) FIRM NAME	(2) FIRM LOCATION (City and State)	(3) ROLE

F. EXAMPLE PROJECTS WHICH BEST ILLUSTRATE PROPOSED TEAM'S QUALIFICATIONS FOR THIS CONTRACT (Present as many projects as requested by the agency, or 10 projects, if not specified. Complete one Section F for each project.)		20. EXAMPLE PROJECT KEY NUMBER <div>4</div>					
21. TITLE AND LOCATION (City and State) Union Park Community Development District Pasco County, FL		22. YEARS COMPLETED <table border="1"> <tr> <td>PROFESSIONAL SERVICES</td> <td>CONSTRUCTION (if applicable)</td> </tr> <tr> <td>2013-Ongoing</td> <td>N/A</td> </tr> </table>		PROFESSIONAL SERVICES	CONSTRUCTION (if applicable)	2013-Ongoing	N/A
PROFESSIONAL SERVICES	CONSTRUCTION (if applicable)						
2013-Ongoing	N/A						
23. PROJECT OWNER'S INFORMATION							
a. PROJECT OWNER Union Park CDD		b. POINT OF CONTACT NAME Heather Dilley, BreezeHome					
		c. POINT OF CONTACT TELEPHONE NUMBER 813.565.4663					
24. BRIEF DESCRIPTION OF PROJECT AND RELEVANCE TO THIS CONTRACT (Include scope, size, and cost)							
Union Park CDD manages a partially completed planned community containing single family units, a recreation facility, stormwater management systems, and common areas. Stantec provides engineering services for proper operation and maintenance of CDD infrastructure, as well as annual public facilities reports.							
<div> </div>							
Source: https://unionpark.metroplaces.com							

25. FIRMS FROM SECTION C INVOLVED WITH THIS PROJECT			
a.	(1) FIRM NAME	(2) FIRM LOCATION (City and State)	(3) ROLE
	Stantec	Tampa, FL	Civil Engineering, Surveying, Construction Administration Support
b.	(1) FIRM NAME	(2) FIRM LOCATION (City and State)	(3) ROLE
c.	(1) FIRM NAME	(2) FIRM LOCATION (City and State)	(3) ROLE
d.	(1) FIRM NAME	(2) FIRM LOCATION (City and State)	(3) ROLE

F. EXAMPLE PROJECTS WHICH BEST ILLUSTRATE PROPOSED TEAM'S QUALIFICATIONS FOR THIS CONTRACT (Present as many projects as requested by the agency, or 10 projects, if not specified. Complete one Section F for each project.)		20. EXAMPLE PROJECT KEY NUMBER 5	
21. TITLE AND LOCATION (City and State)		22. YEARS COMPLETED	
Ballantrae Community Development District Pasco County, FL		PROFESSIONAL SERVICES	CONSTRUCTION (if applicable)
		2006-Ongoing	N/A
23. PROJECT OWNER'S INFORMATION			
a. PROJECT OWNER	b. POINT OF CONTACT NAME	c. POINT OF CONTACT TELEPHONE NUMBER	
Ballantrae CDD	Patricia Thibault, DPFG	813.418.7473	
24. BRIEF DESCRIPTION OF PROJECT AND RELEVANCE TO THIS CONTRACT (Include scope, size, and cost)			
<p>Ballantrae is an 436-acre, upscale community of 969 homes plus a day care center, all built between 2004-09. The community is located about 20 miles north of Tampa, FL in Land O' Lakes, along SR54 a mile east of the Suncoast Parkway (SR589). Stantec is the CDD Engineer, providing ongoing services as needed by the Board of Supervisors and District Manager. We are providing District Engineering services to maintain District owned and maintained infrastructure, including wet detention stormwater ponds.</p>			
			
Source: https://www.ballantraecdd.org/			

25. FIRMS FROM SECTION C INVOLVED WITH THIS PROJECT			
a.	(1) FIRM NAME	(2) FIRM LOCATION (City and State)	(3) ROLE
	Stantec	Tampa, FL	Civil Engineering
b.	(1) FIRM NAME	(2) FIRM LOCATION (City and State)	(3) ROLE
c.	(1) FIRM NAME	(2) FIRM LOCATION (City and State)	(3) ROLE
d.	(1) FIRM NAME	(2) FIRM LOCATION (City and State)	(3) ROLE

F. EXAMPLE PROJECTS WHICH BEST ILLUSTRATE PROPOSED TEAM'S QUALIFICATIONS FOR THIS CONTRACT (Present as many projects as requested by the agency, or 10 projects, if not specified. Complete one Section F for each project.)		20. EXAMPLE PROJECT KEY NUMBER 6	
21. TITLE AND LOCATION (City and State)		22. YEARS COMPLETED	
Northwood Community Development District Pasco County, FL		PROFESSIONAL SERVICES	CONSTRUCTION (if applicable)
		2006-Ongoing	N/A
23. PROJECT OWNER'S INFORMATION			
a. PROJECT OWNER	b. POINT OF CONTACT NAME	c. POINT OF CONTACT TELEPHONE NUMBER	
Northwood CDD	Gene Roberts, Inframark	813.873.7300	
24. BRIEF DESCRIPTION OF PROJECT AND RELEVANCE TO THIS CONTRACT (Include scope, size, and cost)			
<p>The Northwood Development has an amenity center, which includes a resort style swimming pool, a playground, basketball courts, Tennis Courts and a New 2,000 Square Foot Clubhouse. In addition, the Development includes several neighborhood ponds which are connected by pedestrian walkways.</p> <p>Stantec serves as the District Engineer and have been responsible for the design, permitting, and construction administration of a 2,000 s.f. clubhouse, as well as Southwest Florida Water Management District periodic inspections of the community stormwater facilities.</p>			
			
Source: https://northwoodcdd.com/			

25. FIRMS FROM SECTION C INVOLVED WITH THIS PROJECT			
a.	(1) FIRM NAME	(2) FIRM LOCATION (City and State)	(3) ROLE
	Stantec	Tampa, FL	Civil Engineering
b.	(1) FIRM NAME	(2) FIRM LOCATION (City and State)	(3) ROLE
c.	(1) FIRM NAME	(2) FIRM LOCATION (City and State)	(3) ROLE
d.	(1) FIRM NAME	(2) FIRM LOCATION (City and State)	(3) ROLE

F. EXAMPLE PROJECTS WHICH BEST ILLUSTRATE PROPOSED TEAM'S QUALIFICATIONS FOR THIS CONTRACT
(Present as many projects as requested by the agency, or 10 projects, if not specified. Complete one Section F for each project.)

20. EXAMPLE PROJECT KEY NUMBER

7

21. TITLE AND LOCATION (City and State)

Meadow Point III Community Development District
Pasco County, FL

22. YEARS COMPLETED

PROFESSIONAL SERVICES	CONSTRUCTION (if applicable)
2006 - Ongoing	N/A

23. PROJECT OWNER'S INFORMATION

a. PROJECT OWNER

Meadow Point III CDD

b. POINT OF CONTACT NAME

Darryl Adams, Rizzetta & Co.

c. POINT OF CONTACT TELEPHONE NUMBER

813.994.1001 x7958

24. BRIEF DESCRIPTION OF PROJECT AND RELEVANCE TO THIS CONTRACT (Include scope, size, and cost)

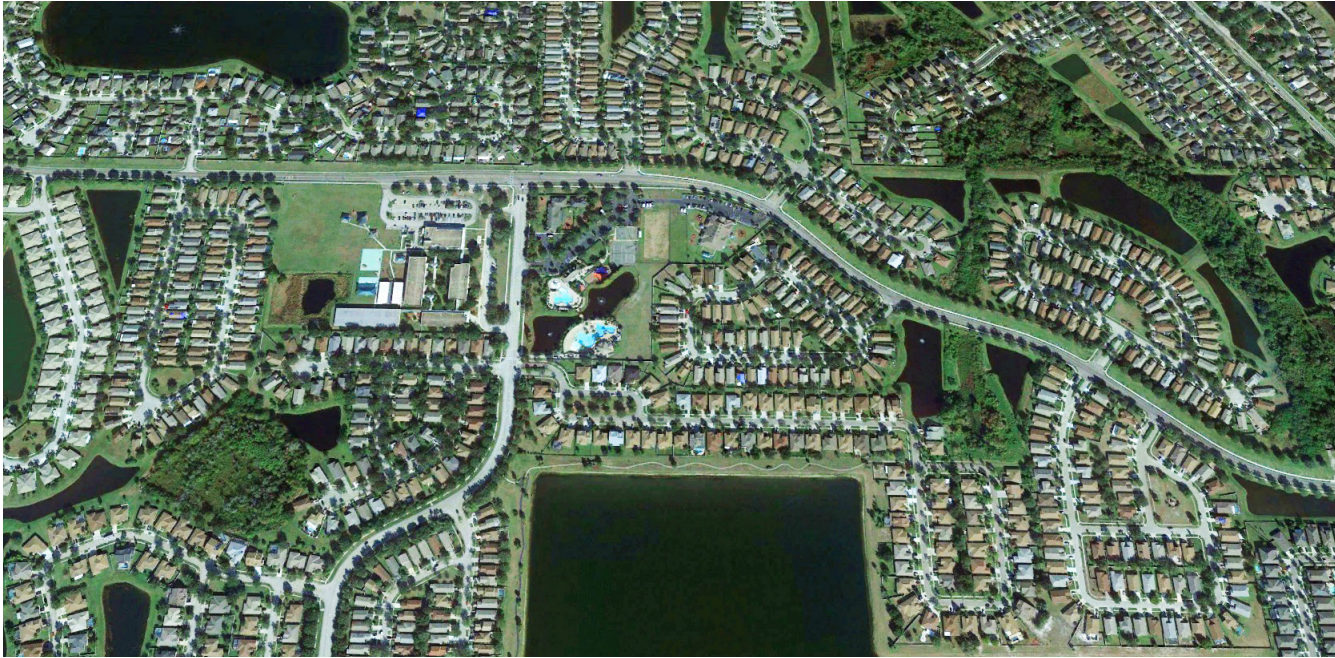
The District currently encompasses approximately 977-acres of land located entirely within Pasco County, Florida. As a local unit of special-purpose government, the District provides an alternative means for planning, financing, constructing, operating and maintaining various public improvements and community facilities within its jurisdiction.

Stantec has provided a range of engineering services associated with serving as the Community Development District (CDD) District Engineer. The CDD assets include a recreation facility, roadways, stormwater management systems, landscape/hardscape, and irrigation systems.



25. FIRMS FROM SECTION C INVOLVED WITH THIS PROJECT

a.	(1) FIRM NAME	(2) FIRM LOCATION (City and State)	(3) ROLE
	Stantec	Tampa, FL	Civil Engineering
b.	(1) FIRM NAME	(2) FIRM LOCATION (City and State)	(3) ROLE
c.	(1) FIRM NAME	(2) FIRM LOCATION (City and State)	(3) ROLE
d.	(1) FIRM NAME	(2) FIRM LOCATION (City and State)	(3) ROLE

F. EXAMPLE PROJECTS WHICH BEST ILLUSTRATE PROPOSED TEAM'S QUALIFICATIONS FOR THIS CONTRACT (Present as many projects as requested by the agency, or 10 projects, if not specified. Complete one Section F for each project.)		20. EXAMPLE PROJECT KEY NUMBER 8	
21. TITLE AND LOCATION (City and State)		22. YEARS COMPLETED	
Rivercrest Community Development District Hillsborough County, FL		PROFESSIONAL SERVICES	CONSTRUCTION (if applicable)
		2006-Ongoing	N/A
23. PROJECT OWNER'S INFORMATION			
a. PROJECT OWNER	b. POINT OF CONTACT NAME	c. POINT OF CONTACT TELEPHONE NUMBER	
Rivercrest CDD	Jordan Lansford, LCAM, Governmental Management Services	813.344.4844 x106	
24. BRIEF DESCRIPTION OF PROJECT AND RELEVANCE TO THIS CONTRACT (Include scope, size, and cost)			
<p>District Engineering services includes the operation and maintenance of District infrastructure, including stormwater management systems and clubhouse facilities. The Rivercrest CDD is a completed community with infrastructure that includes open space, stormwater management, and landscaped common areas and irrigation systems.</p> <p>The Stantec team is responsible for ongoing client and project coordination, account management, and project scheduling. Stantec was selected for annual district engineering services to assist the District Manager and Board of Supervisors to properly budget, operate, and maintain CDD infrastructure, which includes stormwater management facilities and recreation facilities.</p>			
			

25. FIRMS FROM SECTION C INVOLVED WITH THIS PROJECT			
a.	(1) FIRM NAME	(2) FIRM LOCATION (City and State)	(3) ROLE
	Stantec	Tampa, FL	Civil Engineering
b.	(1) FIRM NAME	(2) FIRM LOCATION (City and State)	(3) ROLE
c.	(1) FIRM NAME	(2) FIRM LOCATION (City and State)	(3) ROLE
d.	(1) FIRM NAME	(2) FIRM LOCATION (City and State)	(3) ROLE

G. KEY PERSONNEL PARTICIPATION IN EXAMPLE PROJECTS

[illegible]

29. EXAMPLE PROJECTS KEY

No.	TITLE OF EXAMPLE PROJECT (From Section F)	No.	TITLE OF EXAMPLE PROJECT (From Section F)
1	Heritage Isles Golf & Country Club Community Development District	5	Ballantrae Community Development District
2	TPOST Community Development District	6	Northwood Community Development District
3	Meadow Pointe IV Community Development District	7	Meadow Point III Community Development District
4	Concord Station Community Development District	8	Rivercrest Community Development District

H. ADDITIONAL INFORMATION

30. PROVIDE ANY ADDITIONAL INFORMATION REQUESTED BY THE AGENCY. ATTACH ADDITIONAL SHEETS AS NEEDED.

Stantec provides engineering, planning, permitting, and cost estimating services for Community Development Districts (CDDs), dependent and independent districts, Municipal Service Taxing Units/Benefit Units (MSTU/BU), and other special assessment districts.

We offer a total scope of services that includes, but is not limited to, the following:

- General Consultation on District Issues
- Master Planning of Infrastructure
- Water Management Systems and Facilities
- Water and Sewer Systems and Facilities
- Roads, Landscaping and Street Lighting Design and Plans
- Existing Systems Studies and Analysis
- Environmental Permitting
- Cost Estimates for Plan Implementation
- Bidding and Contractor Selection
- Government Permitting
- Water Conversation Studies and Design
- Water Supply Studies
- Construction Phase Observation
- Contract Management and Inspection Services
- Expert Witness Testimony
- Utility Rate Studies
- Potable Water System Plans and Design
- Irrigation System Plans and Design
- Wastewater Collection System Plans and Design
- Engineering Reports for Bonding

The following represents Stantec's additional prior experience in CDD's, Independent Districts and MSTU/BUS:

- Ballantrae CDD, Pasco County
- Chapel Creek CDD, Pasco County
- Eastlake Oaks CDD, Pinellas County
- Meadow Point I CDD, III, IV CDD, Pasco County
- Northwood CDD, Pasco County
- Union Park CDD, Pasco County
- Cypress Creek CDD, Hillsborough County
- Hammocks CDD, City of Tampa
- Hawk's Point CDD, Hillsborough County
- Heritage Harbor CDD, Hillsborough County
- Heritage Isles CDD, City of Tampa
- K Bar Ranch CDD, City of Tampa
- Panther Trace I, II CDD, Hillsborough County
- Rivercrest CDD, Hillsborough County
- Waterchase CDD, Hillsborough County
- Parkway Center CDD, Hillsborough County

I. AUTHORIZED REPRESENTATIVE

The foregoing is a statement of facts.

31. SIGNATURE


32. DATE



2/29/2024

33. NAME AND TITLE

David Kemper, PE, Senior Principal

ARCHITECT - ENGINEER QUALIFICATIONS				1. SOLICITATION NUMBER (If any)											
PART II – GENERAL QUALIFICATIONS (If a firm has branch offices, complete for each specific branch office seeking work.)															
2a. FIRM (OR BRANCH OFFICE) NAME Stantec Consulting Services Inc.				3. YEAR ESTABLISHED 2012	4. UNIQUE ENTITY IDENTIFIER RR7KJAM4G4Z3										
2b. STREET 777 S Harbour Island Boulevard Suite 600				5. OWNERSHIP											
2c. CITY Tampa		2d. STATE FL		2e. ZIP CODE 33602-5729											
6a. POINT OF CONTACT NAME AND TITLE Douglas Stoker PE - ENV SP, Vice President				a. TYPE Corporation											
6b. TELEPHONE NUMBER (727) 431-1550		6c. EMAIL ADDRESS douglas.stoker@stantec.com		b. SMALL BUSINESS STATUS N/A											
7. NAME OF FIRM (If block 2a is a branch office) Stantec Inc.															
8a. FORMER FIRM NAME(S) (If any)				8b. YEAR ESTABLISHED	8c. UNIQUE ENTITY IDENTIFIER										
9. EMPLOYEES BY DISCIPLINE				10. PROFILE OF FIRM'S EXPERIENCE AND ANNUAL AVERAGE REVENUE FOR LAST 5 YEARS											
a. Function Code	b. Discipline	c. No. of Employees		a. Profile Code	b. Experience	c. Revenue Index Number (See Below)									
		(1) Firm	(2) Branch												
02	Administrative	5432	40	A01	Acoustics; Noise Abatement	7									
06	Architect	1250	1	A05	Airports; Navais; Airport Lighting; Aircraft Fueling	8									
07	Biologist	411	1	B02	Bridges	10									
08	CAD Technician	1106	7	C16	Construction Surveying	7									
10	Chemical Engineer	367	3	E02	Educational Facilities; Classrooms	10									
12	Civil Engineer	3757	26	E09	EIS, Assessments of Statements	10									
14	Computer Programmer	1197	2	H07	Highways; Streets; Airfield Paving; Parking Lots	10									
15	Construction Inspector	360	1	H09	Hospital & Medical Facilities	10									
16	Construction Manager	380	2	H11	Housing (Residential, Multi-Family, Apts, Condos)	10									
21	Electrical Engineer	1052	1	I01	Industrial Building; Manufacturing Plants	10									
23	Environmental Engineer	871	1	O01	Office Buildings; Industrial Parks	10									
24	Environmental Scientist	1756	4	P05	Planning (Comm., Regional, Areawide , and State)	9									
27	Foundation/Geotechnical Engineer	525	1	P06	Planning (Site, Installation, and Project)	10									
29	GIS Specialist	306	5	R04	Recreation Facilities (Parks, Marinas, Etc.)	8									
30	Geologist	309	1	S04	Sewage Collection, Treatment, and Disposal	10									
38	Land Surveyor	381	14	S10	Surveying; Platting; Mapping; Flood Plain Studies	8									
42	Mechanical Engineer	1153	9	S13	Storm Water Handling & Facilities	9									
47	Planner, Urban/Regional	951	8	T03	Traffic & Transportation Engineering	10									
48	Project Manager	1723	15	T04	Topographic Surveying and Mapping	6									
57	Structural Engineer	1075	4	U02	Urban Renewals; Community Development	10									
	Other Employees	3934	2	W02	Water Resources; Hydrology; Ground Water	10									
Total		28296	148	W03	Water Supply; Treatment , and Distribution	10									
11. ANNUAL AVERAGE PROFESSIONAL SERVICES REVENUES OF FIRM FOR LAST 3 YEARS (insert revenue index number shown at right)		PROFESSIONAL SERVICES REVENUE INDEX NUMBER													
a. Federal Work	10	<table style="width: 100%; border: none;"> <tr> <td style="width: 50%;">1. Less than \$100,000</td> <td style="width: 50%;">6. \$2 million to less than \$5 million</td> </tr> <tr> <td>2. \$100,000 to less than \$250,000</td> <td>7. \$5 million to less than \$10 million</td> </tr> <tr> <td>3. \$250,000 to less than \$500,000</td> <td>8. \$10 million to less than \$25 million</td> </tr> <tr> <td>4. \$500,000 to less than \$1 million</td> <td>9. \$25 million to less than \$50 million</td> </tr> <tr> <td>5. \$1 million to less than \$2 million</td> <td>10. \$50 million or greater</td> </tr> </table>				1. Less than \$100,000	6. \$2 million to less than \$5 million	2. \$100,000 to less than \$250,000	7. \$5 million to less than \$10 million	3. \$250,000 to less than \$500,000	8. \$10 million to less than \$25 million	4. \$500,000 to less than \$1 million	9. \$25 million to less than \$50 million	5. \$1 million to less than \$2 million	10. \$50 million or greater
1. Less than \$100,000	6. \$2 million to less than \$5 million														
2. \$100,000 to less than \$250,000	7. \$5 million to less than \$10 million														
3. \$250,000 to less than \$500,000	8. \$10 million to less than \$25 million														
4. \$500,000 to less than \$1 million	9. \$25 million to less than \$50 million														
5. \$1 million to less than \$2 million	10. \$50 million or greater														
b. Non-Federal Work	10														
c. Total Work	10														
12. AUTHORIZED REPRESENTATIVE The foregoing is a statement of facts.															
a. SIGNATURE 					b. DATE February 22, 2024										
c. NAME AND TITLE Amy Campbell - Senior Principal, Regional Leader US South															

AUTHORIZED FOR LOCAL REPRODUCTION

STANDARD FORM 330 (REV. 7/2021)